

## New Richmond Hill H.S. Parking Lot Flow for Increased Safety

With the increase in vehicle traffic in our school parking lot and pedestrian traffic it has become necessary to create an altered vehicle flow on our parking lot and driveway areas.

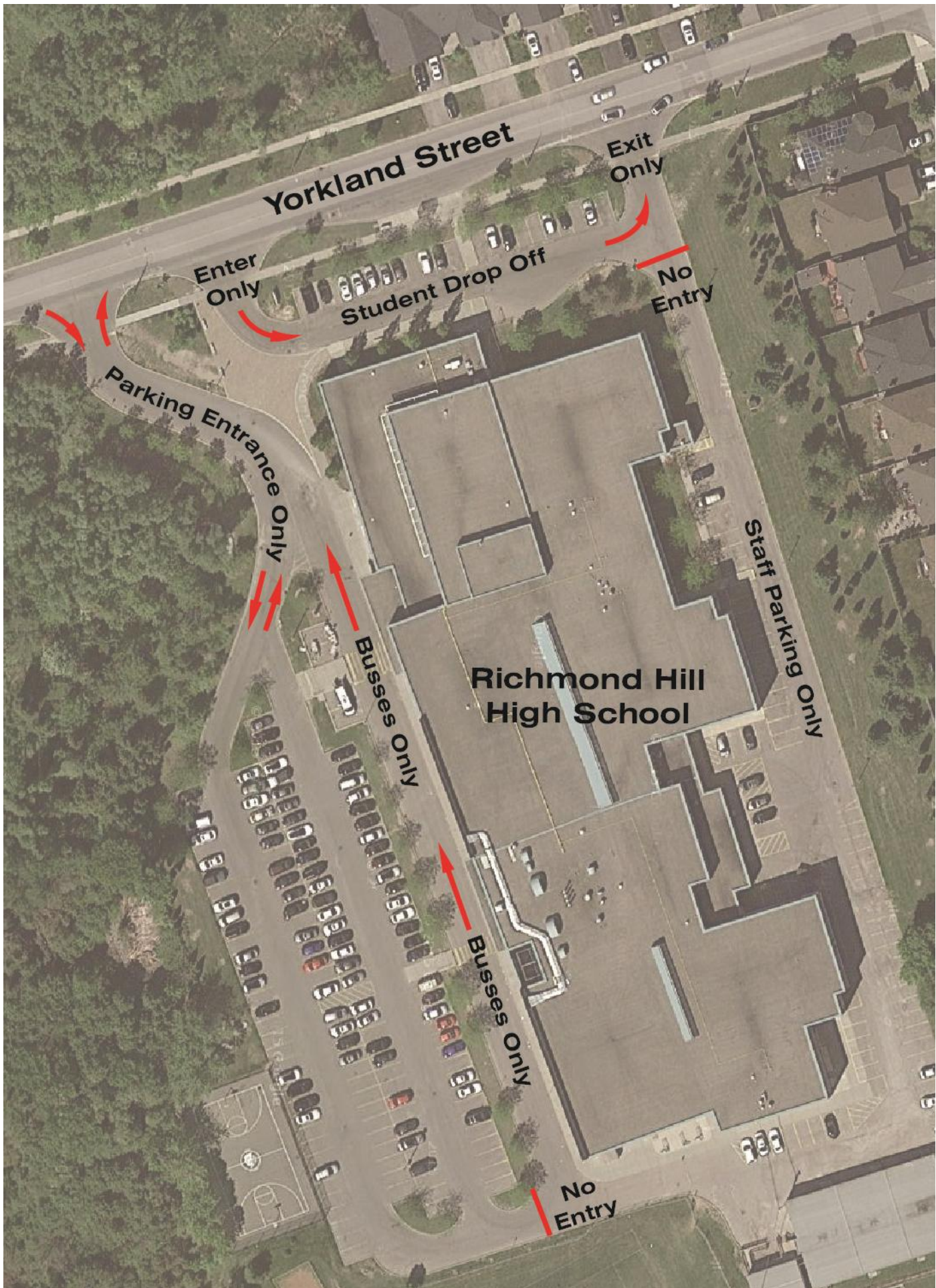
Below is a diagram of the new parking lot flow which will take effect on Tuesday October 20, 2015. Signage has been posted for the new traffic flow which will be taking effect on Tuesday October 20, 2015.

We will be having police at the school when the new traffic flow takes effect to assist us in informing drivers of the appropriate traffic routes.

The new vehicle directional flow is:

- The south driveway off of Yorkland St. to the school is only for busses, trucks making deliveries, visitors who will be parking their vehicle and coming into the school and staff and student parking. This area is **not** for student drop off or pick up.
- The upper driveway at the front doors of the school is for busses only and those requiring handicap parking. This area is **not** for student drop off or pick up.
- The second south entrance off of Yorkland St. to the school is the entrance for student drop off and pick up loop.
- The north driveway off of Yorkland St. to the school is an exit from the student drop off and pick up loop only. Parking on the north side of the school is for staff only. This driveway is a fire route and vehicles are not to be parked in the driveway.

We thank you for your cooperation in advance to follow our new vehicle traffic flow routes to make our school safe for all students and visitors.



**Yorkland Street**

**Enter Only**

**Student Drop Off**

**Exit Only**

**No Entry**

**Parking Entrance Only**

**Buses Only**

**Richmond Hill High School**

**Staff Parking Only**

**Buses Only**

**No Entry**